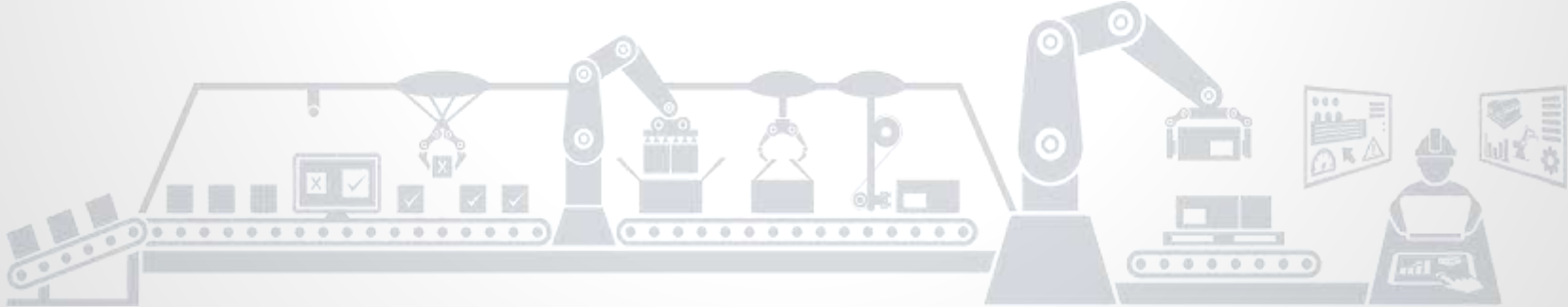
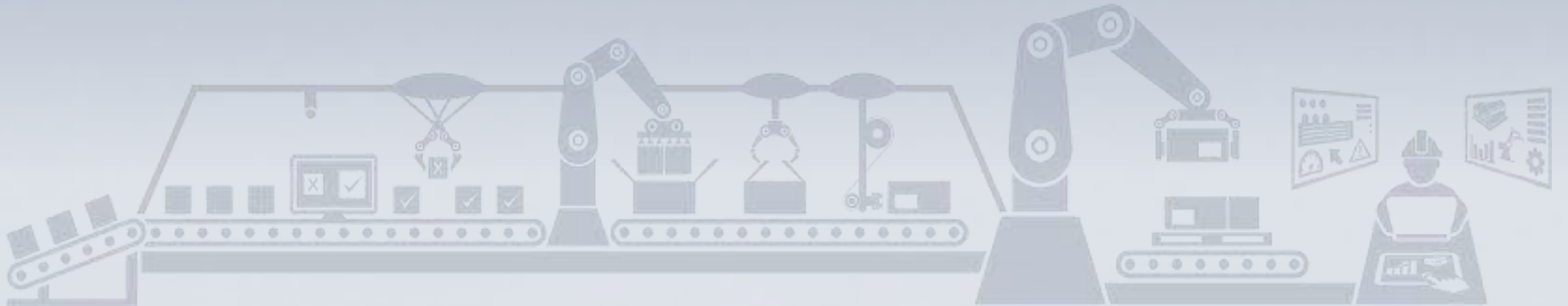


Remote Data Acquisition System



Remote Data Acquisition System





**Convert data from connected devices and sensors
to actionable insights**

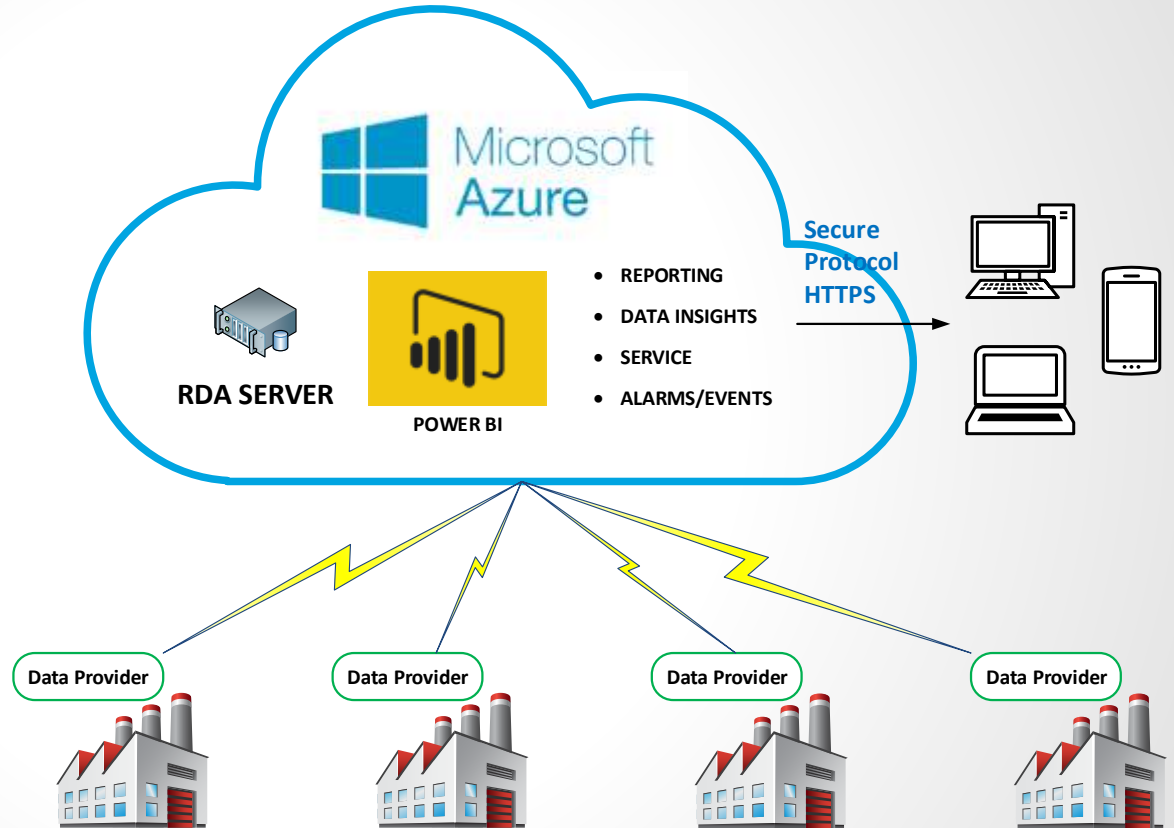
**An enterprise grade solution
based on Microsoft cloud**



- **Remotely acquire data from factories/machines constructed by SABO S.A. (or not) over secure internet connection**
- **Data manipulation, statistical analysis**
- **Custom reporting and trending for the recorded data**
- **Publish dashboards/reports over secure internet protocol to authorized accounts**
- **Vendor / platform agnostic service**
- **Create a web based environment for data visualizations**

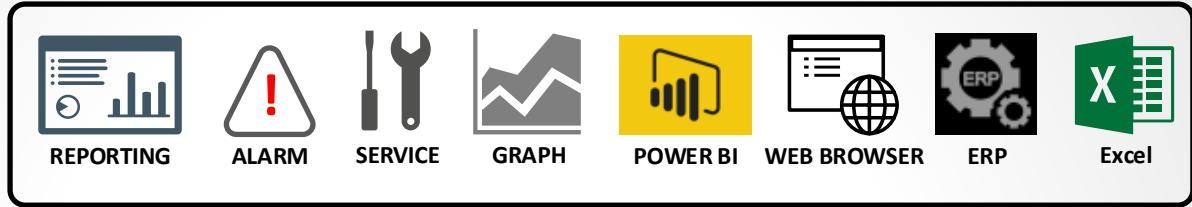


- **Minimum local infrastructure**
- **Data encrypted**
- **Easy configuration**

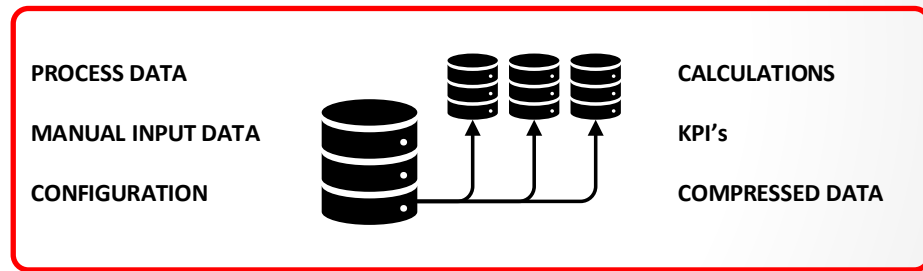




**DATA INSIGHTS
ANALYSIS
LAYER - CLOUD**



**DATA STORAGE /
MANAGEMENT
LAYER - CLOUD**



**DATA ACCESSING
LAYER - PLANT**

PROVIDERS
20 SCADA Standards
WinCC/PCS7, GE
iFIX, InTouch

INTERFACES
OPC, DDE, OPC UA,
ODBC, ASCII, CSV,
PLC / DDC protocols



Annually Maintenance Schedule

Annual overview 2019 of due cycle actions in group «Milling_Machines»

	Jan	Feb	Mar	Apr	May	Jun	Jul	Aug	Sep	Oct	Nov	Dec
01	Tue 1	Fri 1	Fri	Mon 1	We	Sat	Mon	Thu	Sun	Oct	Fri	Sun
02	We	Sat	Sat	Tue	Thu	Sun	Tue	Fri	Mon	We	Sat	Mon
03	Thu	Sun	Sun	We	Fri	Mon	We	Sat	Tue	Thu	Sun	Tue
04	Fri	Mon	Mon	Thu	Sat	Tue	Thu	Sun	We	Fri	Mon	We
05	Sat	Tue	Tue	Fri	Sun	We	Fri	Mon	Thu	Sat	Tue	Thu
06	Sun	We	We	Sat	Mon	Thu	Sat	Tue	Fri	Sun	We	Fri
07	Mon	Thu	Thu	Sun	Tue	Fri	Sun	We	Sat	Mon	Thu	Sat
08	Tue	Fri	Fri	Mon	We	Sat	Mon	Thu	Sun	Tue	Fri	Sun
09	We	Sat	Sat	Tue	Thu	Sun	Tue	Fri	Mon	We	Sat	Mon
10	Thu	Sun	Sun	We	Fri	Mon	We	Sat	Tue	Thu	Sun	Tue
11	Fri	Mon	Mon	Thu	Sat	Tue	Thu	Sun	We	Fri	Mon	We
12	Sat	Tue	Tue	Fri	Sun	We	Fri	Mon	Thu	Sat	Tue	Thu
13	Sun	We	We	Sat	Mon	Thu	Sat	Tue	Fri	Sun	We	Fri
14	Mon 1	Thu 1	Thu	Sun	Tue	Fri	Sun	We	Sat	Mon	Thu	Sat
15	Tue 1	Fri	Fri	Mon	We	Sat	Mon	Thu	Sun	Tue	Fri	Sun
16	We	Sat	Sat	Tue	Thu	Sun	Tue	Fri	Mon	We	Sat	Mon
17	Thu	Sun 1	Sun	We	Fri	Mon	We	Sat	Tue	Thu	Sun	Tue
18	Fri	Mon	Mon	Thu	Sat	Tue	Thu	Sun	We	Fri	Mon	We
19	Sat	Tue	Tue	Fri	Sun	We	Fri	Mon	Thu	Sat	Tue	Thu
20	Sun 1	We 1	We	Sat	Mon	Thu 1	Sat	Tue	Fri	Sun	We	Fri 1
21	Mon	Thu	Thu	Sun	Tue	Fri	Sun	We	Sat	Mon	Thu	Sat
22	Tue	Fri 1	Fri	Mon	We	Sat	Mon	Thu	Sun	Tue	Fri	Sun
23	We	Sat	Sat	Tue	Thu	Sun	Tue	Fri	Mon	We	Sat	Mon
24	Thu	Sun	Sun	We	Fri	Mon	We	Sat	Tue	Thu	Sun	Tue
25	Fri	Mon 1	Mon	Thu	Sat	Tue	Thu	Sun	We	Fri	Mon	We
26	Sat	Tue	Tue	Fri	Sun	We	Fri	Mon	Thu	Sat	Tue	Thu
27	Sun	We	We	Sat	Mon	Thu	Sat	Tue	Fri	Sun	We	Fri
28	Mon	Thu	Thu	Sun	Tue	Fri	Sun	We	Sat	Mon	Thu	Sat
29	Tue		Fri	Mon	We	Sat	Mon	Thu	Sun	Tue	Fri	Sun
30	We		Sat	Tue	Thu	Sun	Tue	Fri	Mon	We	Sat	Mon
31	Thu		Sun		Fri		We	Sat		Thu		Tue

Monthly Maintenance Record per machine

ΙΣΤΟΡΙΚΟ ΣΥΝΤΗΡΗΣΕΩΝ ΜΗΧΑΝΗΜΑΤΟΣ : HASS VF2 - 2632 / 18



Τμήμα : Milling_Machines

Ημερομηνία Εγκατάστασης :

Περιγραφή Μηχάνημασ / Εξοπλισμού : ΚΑΒΕΤΟ ΚΕΝΤΡΟ ΚΑΤΕΡΓΑΣΙΑΣ

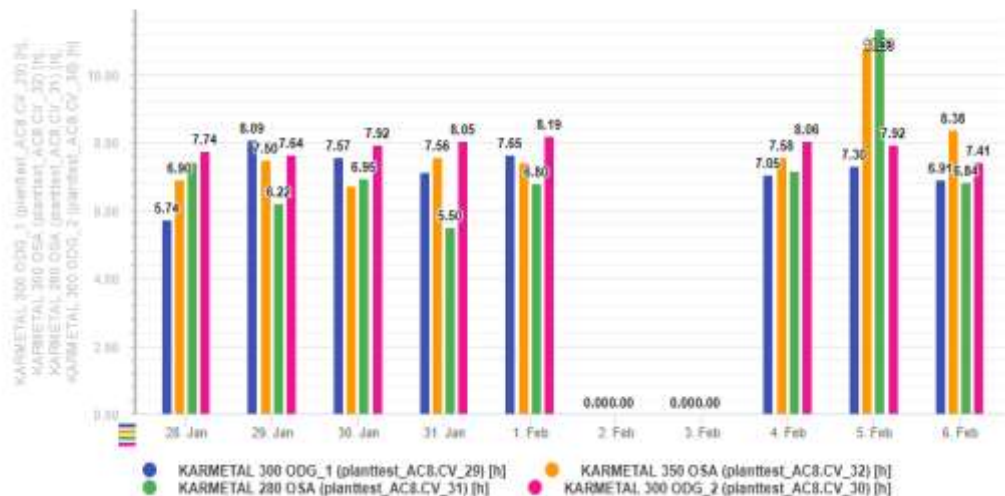
Α/Α	Τύπος συντήρησης	Είδος Συντήρησης	Συντηρητής	Εργοδότης	Ημερομηνία	Παρατηρήσεις	Κόστος
1	Μηνιαία	Start ACRON recording			14.12.2019		
2	Six Months Maintenance - Vendor's Instructions	Start ACRON recording			15.01.2019		
3	Annual Maintenance - Vendor's Instructions	Start ACRON recording			15.01.2019		
4	Weekly Maintenance - Vendor's Instructions	Start ACRON recording			15.01.2019		
5	Monthly Maintenance - Vendor's Instructions	Start ACRON recording			15.01.2019		
6	Daily Maintenance - Vendor's Instructions	Start ACRON recording			15.01.2019		
7	Daily Maintenance - Vendor's Instructions	Cyclic action	Benitar_1		15.01.2019	Η συντήρηση ολοκληρώθηκε επιτυχώς	10,00 €
8	Weekly Maintenance - Vendor's Instructions	Cyclic action	Benitar_1		15.01.2019	Η συντήρηση ολοκληρώθηκε επιτυχώς	20,00 €
9	Monthly Maintenance - Vendor's Instructions	Cyclic action	API		21.01.2019	Η συντήρηση ολοκληρώθηκε επιτυχώς	10,00 €
10	Weekly Maintenance - Vendor's Instructions	Cyclic action	API		28.01.2019		100,00 €
11	Μηνιαία	Cyclic action	Benitar_1		07.02.2019	Η συντήρηση ολοκληρώθηκε επιτυχώς	50,00 €



Machine Time Metering

Weekly Hours for SABO's Saws

Little Saws



Efficiency

Daily Efficiency



Human Time Metering (Manual input)





- **Process** wise parametrization of the customers installation
- **Decision-making** algorithms for improving **production, cost, efficiency** etc.
- **Proactive maintenance** for the machinery
- **Event creation and management**
- **Access your reports anywhere, from any device**

Convert IIoT data to actionable insights



**An enterprise grade solution
based on Microsoft cloud**